

Engine Number Guide

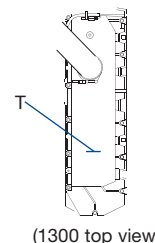
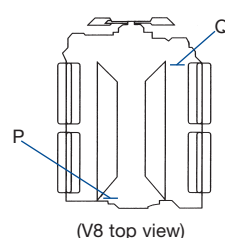
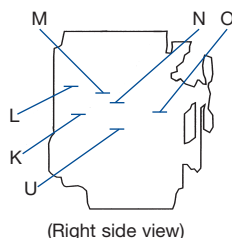
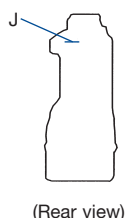
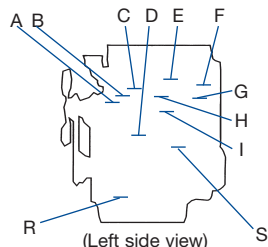
Engines < 2 litre/cylinder (produced post 1974)

Engine number guide		
Example:	PJ 12345 U 123456P	
Engine family and type code	PJ	1106D-E66TA
Parts list number of SOS order reference number	12345	
Country of manufacture code	U	UK
Engine serial number	123456	
Year of manufacture code	P	2007

Year of manufacture code					
This code indicates the calendar year of manufacture. The letters I, O, Q, R and Z will not be used.					
A	1974	L	1984	Y	1994
B	1975	M	1985	A	1995
C	1976	N	1986	B	1996
D	1977	P	1987	C	1997
E	1978	S	1988	D	1998
F	1979	T	1989	E	1/1/99-31/3/99
G	1980	U	1990	F	1/4/99-31/12/99
H	1981	V	1991	G	2000
J	1982	W	1992	H	2001
K	1983	X	1993	J	2002
				K	2003
				L	2004
				M	2005
				N	2006
				P	2007
				R ^{1/S}	2008
				T	2009
				U	2010
				V	2011
				W	2012
				X	2013
				Y	2014

Country of manufacture code					
This code indicates the country in which the basic engine was manufactured.					
A	Argentina	H	Group	L	Italy
B	Brazil ²	HC	China ²	M	Mexico
C	Australia	HM	Indonesia	MX	Mexico
D	Germany	HK	Iraq	N	USA ²
E	Spain	HU	Uruguay	P	Poland
F	France	J	Japan	R	China ²
G	Greece	K	Korea	S	India
				SA	South Africa
				T	Turkey
				U	UK ²
				V	Pakistan
				W	Iran
				X	Peru
				Y	Yugoslavia

Where to find your engine number



Engine type	Position	Engine type	Position	Engine type	Position
3.152	M	4.318	F	Perama/100/400 Series	O
4.108	A	4.41	H	Phaser/1000/1100(A/B/C) Series	H or J
4.154/200 Series	B	6.247	C or F	1104D	S
4.165	B or G	6.354	D	850 Series	D or R
4.203	J or N	V8.540	Q	1204E	S
4.212/4.248/900 Series	C	Peregrine/1300 Series	I or O	1206E	R
1106D including PK	R	V8.640	P	1300 Series	T
4.236	C or L	700/800 Series	K	1600 Series	U

Notes

¹ A number of engines were built with the letter 'R' as the year of manufacture code. In the middle of January 2008, the year of manufacture code was changed to the letter 'S'. If your full engine serial number ends with the letter 'R', Perkins Engines Company Limited will recognise the full engine serial number.

² Represents current manufacturing facilities.

If the letter 'R' appears after the country code this represents a remanufactured engine (ie UR = UK remanufactured engine).

Engine family and type code - small/medium engines

A	Phaser/1004 Series		900 Series	GN	404D-22	KL	103.07		1104C Range		800D Range
AA	1004-4	CR	903-27	GP	404D-22T	KN	102.05	RE	1104C-44	UK	804D-33
AB	1004-4T	CP	903-27	GR	404D-22TA	KR	104.22	RF	1104C-E44	UL	804D-33T
AC	1004-4T	CS	903-25	GS	403D-17	KS	103.11	RG	1104C-44T	UM	804D-33TA
AD	1004e-4TW	CT	903-27S	GT	403A-11	L	4.236 Series	RH	1104C-E44T	V	1106C Range
AE	Fed. CC	D	1103C Range	GU	403A-15	LA	4.212	RJ	1104C-44TA	VK	1106C-E60TA
AF	1004-40S	DC	1103C-33	GV	404A-22	LD	4.236	RK	1104C-E44TA	X	V8.540 Series
AG	1004-4	DD	1103C-33T	H	4.165 Series	LE	G4.236		1104A Range	XA	V8.510
AH	1004-4T	DE	1103C-33TA	HA	4.165	LF	4.248	RR	1104A-44	XB	TV8.510
	New 1000 Series		1103B Range		400C Range	LG	4.2482	RS	1104A-44T	XC	V8.540
AJ	1004-40	DF	1103B-33	HB	402C-05	LH	C4.236	RT	1104A-44TA	XE	TV8.540
AK	1004-40T	DG	1103B-33T	HD	403C-07	LJ	T4.236	SD	Sabre CC6.68		1103D Range
AL	1004-40TA		1103A Range	HH	403C-11	LM	4.41	T	6.354 Series	XG	1103D-E33
AM	1004-40T	DJ	1103A-33	HL	403C-15		1204E Range	TC	6.354	XH	1103D-E33T
AP	1004-40	DK	1103A-33T	HM	403C-17	MK	1204E-E44TA wall flow	TD	H6.354	XJ	1103D-E33TA
AQ	1004-40T	E	4.108 Series	HN	404C-15	ML	1204E-E44TA wall flow	TE	T6.354	XK	1103D-33
AR	1004-42	ED	4.108	HP	404C-22	N	4.318 Series	TF	HT6.354	XL	1103D-33T
AS	1004-42	E	400F Range	HR	404C-22T	NC	4.318	TG	6.3541	XM	1103D-33TA
AT	1004-40TA	EG	402F-05	J	4.203 Series	ND	4.3182	TH	T6.3541	Y	Phaser/1006 Series
B	Prima/500 Series	EH	403F-07	JD	4.203	NH ² /NP	1104D Range	TJ	6.3542	YA	1006-6
BA	504-2	EJ	403F-11	JE	D4.203	NJ ² /NR	1104D-E44TA	TK	C6.3542	YB	1006-6T
BB	504-2T	EK	403F-15	JF	G4.203		1104D-E44T	TP	T6.3543	YC	1006-6T
	1206 Range	EL	403F-15T	JG	4.2032		1104D-E44TA	TR	6.372	YD	1006e-6T
BK	1206E-E66TA wall flow	EN	404F-22		850 Series	NK	1104D-44	TT	TC6.3541	YE	Fed. CC
BL	1206E-E70TTA wall flow	EP	404F-22T	JR	854E-E34TA wall flow	NL	1104D-44T	TU	T6.3544	YF	1006-60S
		G	4.154/200 Series	JS	854F-E34T wall flow	NM	1104-44TA	TV	6.3724		New 1000 Series
C	3.152 Series	GA	4.154	KT	854F-E34T through flow	P	1106D Range	TW	6.3544	YG	1006-60
CA	P3	GB	4.135	JT	854F-E34T through flow	PJ	1106D-E66TA	TX	C6.3544	YH	1006-60T
CB	3.144	GC	4.182		Perama/100 Series	PK	1106C-E66TA ¹	TY	H6.3544	YJ	1006-60TA
CC	P3.144	GD	4.25	K	102.04		1106A Range	TZ	HT6.3544	YK	1006-60TW
CD	3.152	GE	4.3	KA	103.06	PR	1106A-70TA	U	700 Series	Z	V8.640 Series
CE	D3.152		400D/A Range	KB	103.09		1106C Range	UA	704.30	ZA	V8.640
CF	G3.152	GG	402D-05	KC	103.10	PT	1106C-70TA	UB	704.26	ZB	TV8.640
CG	P3.152	GH	403D-07	KD	103.15	PU	1106D-70TA	UC	704.30		
CJ	3.1522	GJ	403D-11	KE	104.19	PW	1106D-E70TA		800C Range		
CM	3.1524	GK	403D-15	KF	103.13	R	6.247 Series	UE	804C-33		
CN	T3.1524	GL	403D-15T	KH		RA	6.247	UF	804C-33T		
		GM	404D-15								

A	Air to air charge cooling	E	Electronic	H	Horizontal	T	Turbocharged
C	Compensated	F	Federal emissions	N	Narrow front end	U	Unit injection
CC	Charged cooled	FF	Federal	P	Timing chain	V	V form
D	Direct Injection	G	Gasoline/gas	S	Spark ignition	W	Water to air charge cooling

Engine family and type code - large engines

	4006 Range		4012 Range	DGL	4016TAG	JGB	2806TAG2 (A) (18 litre)	WD	1306-E87T/TA post June 2010	WS	1306-E87TA EP pre Jan 2010 IOPU pre June 2010
DIE	4006TESI	DIE	4012TESI	DGA	4016TAG1 (A)	JGD	2806TAG3 (18 litre)	WE	1306-7TA		
DIF	4006TESI	DIF	4012TESI	DGB	4016TAG2 (A)		2500 Range	WF	1306-8T NGD		1306A Range
DIH	4006TRS	DGA	4012-46TAG1 (A)	DGK	4016TWG2		2506TAG1	WG	1306-8TA NGD pre Jan 2010	WGD	1306A-E87TAG3
DIJ	4006TRS	DGB	4012-46TAG2 (A)	DGR	4016TEG1/2 (A)	MGA	2506TAG2	WG	1306C-E87TA post Jan 2010	WGE	1306A-E87TAG4
DGA	4006TAG1	DGD	4012-46TAG3 (A)	DGP	4016-61TRG1 (A)	MGB	2506TAG3	WH	1306-9T NGD	WGH	1306A-E87TAG6
DGB	4006-23TAG2 (A)	DGL	4012-46TAG0A	DGW	4016-61TRG2 (A)	MGD	2506TAG4				1600 Series
DGD	4006-23TAG3 (A)	DGM	4012TWG	DGX	4016-61TRG3 (A)	MGE	2206 Range	WJ	1306-9TA NGD	XGA	1606D-E93TAG1
DGM	4006TWG	DGN	4012-46TWG2 (A)		2300 Range	TGB	2206TAG2		1300 Series EDi	XGB	1606D-E93TAG2
DGP	4006TEG	DGN	4012-46TWG3 (A)	FGA	2306TAG1	TGD	2206TAG3	WK	1306-E76T	XGD	1606D-E93TAG3
	4008 Range	DGV	4012-46TWG4 (A)	FGB	2306TAG2	TGF	2206TAG5	WL	1306-E76TA	XGE	1606A/D-E93TAG4
DIE	4008TESI	DGP	4012TEG	FGD	2306TAG3	TGH	2206TAG6	WM	1306-E87T	XGF	1606A/D-E93TAG5
DIF	4008TESI	DGR	4012TEG2		2800 Range	W	1300 Series Peregrine	WN	1306-E87TA		
DIH	4008TRS		4016 Range	HGA	2806TAG1 (16 litre)	WB	1306-8T	WP	1306-E76T		
DIJ	4008TRS	DIE	4016TESI	HGB	2806TAG2 (16 litre)	WC	1306-8TA	WQ	1306-E76TA		
DGL	4008TAG	DIF	4016TESI	JGA	2806TAG1 (A) (18 litre)	WD	1306-7T pre June 2010	WR	1306-E87T		
DGA	4008TAG (A)	DIG	4016E61-TRS								
DGB	4008TAG (A)	DIH	4016TRS								
DGK	4008TWG2	DIJ	4016TRS								

61	Capacity in litres	E	External water circuit	I	Intercooled	S (SI)	Spark ignition
A	Air to air	E	Electronic	M	Marine	T	Turbocharged
CHP	Combined heat and power	G	Genset	R	Remote cooled	W	Water

Notes

¹ PK Series engines are derived from the 1106D Range platform but are only Stage II EU 2007 generator sets emissions compliant.

² Not available from 2014.

Peterborough products may show a finishing list on the engine plate, eg F1895. It is very important to quote this when spare parts are required.

1300 Series (Stafford)

From January 2010 ElectropaK (EP) and June 2010 Industrial Open Power Unit (IOPU) the engine numbering format for 1300 Series engine range changed to bring it into line with 2000 and 4000 Series engines.

Engine number guide			
Example:	W G H F 7004 N 12345 U		
1300 Series engine	W	Differentiator for customer specific options	7004
Generator set application (D for IOPU)	G	USA country of origin base engine	N
Rating (eg TAG6)	H	Unique serial number	12345
6 cylinders	F	Year of manufacture	U

Engine family and type code			
Build list ID pre January 2010	Build list ID from January 2010	Product type	Speed
1300 Series EP			
WS5360	WGDF7002	1306C-E87TAG3	1500 rpm
WS5361	WGEF7003	1306C-E87TAG4	1500 rpm
WS5358	WGFF7007	1306C-E87TAG5	1500 rpm
WS5362	WGHF7004	1306C-E87TAG6	1500 rpm
WS5359	WGDF7008	1306C-E87TAG3	1800 rpm
WS5357	WGEF7009	1306C-E87TAG4	1800 rpm
WS5363	WGDF7005	1306C-E87TAG3	1500/1800 rpm
WS5364	WGEF7006	1306C-E87TAG4	1500/1800 rpm

Build list ID pre June 2010	Build list ID from June 2010	Product type	Gross rating kWm @ rpm
1300 Series IOPU			
WR4424	WDMF7100	1306-E87T	153.0 @ 2200
WP4423	WDNF7101	1306-E76T	156.5 @ 2400
WR4425	WDPF7102	1306-E87T	168.0 @ 2200
WS4426	WDQF7103	1306-E87TA	186.5 @ 2000
WS4427	WDRF7104	1306-E87TA	186.5 @ 2200
WS4580	WDSF7105	1306-E87TA	197.5 @ 2100
WS4428	WDTF7106	1306-E87TA	197.5 @ 2100
WS5093	WDUF7107	1306-E87TA	197.5 @ 2200
WS5095	WDVF7108	1306-E87TA	197.5 @ 2200
WS5405	WDWF7109	1306-E87TA	223.5 @ 2200
WS5404	WDXF7110	1306-E87TA	246.0 @ 2000

Engine family and type code	
Build list ID	Product type
1306A Range	
WGDF	1306A-E87TAG3
WGEF	1306A-E87TAG4
WGHF	1306A-E87TAG6

1600 Series (Stafford)

Engine number guide			
Example:	X G D F 7147 N 12345 W		
1600 Series engine	X	Differentiator for customer specific options	7147
Generator set application	G	USA country of origin base engine	N
Rating (eg TAG3)	D	Unique serial number	12345
6 cylinders	F	Year of manufacture	W

Engine family and type code	
Build list ID	Product type
1600 Series EP	
XGAF	1606D-E93TAG1
XGBF	1606D-E93TAG2
XGDF	1606D-E93TAG3
XGEF	1606A/D-E93TAG4
XGFF	1606A/D-E93TAG5

From the 1 January 2008 the engine numbering format for large engines changed. The two numbers used previously to determine the number of cylinders per engine, have been replaced by one letter. The following letters will define the number of cylinders:

- 6 cylinder engine F will replace 06 ● 12 cylinder engine M will replace 12
- 8 cylinder engine H will replace 08 ● 16 cylinder engine R will replace 16

2000 Series Electronic (Stafford)

Engine number guide			
Example:	T G A F 0019 U 0178 P		
2000 Series engine	T	Engine specification number	0019
Generator set application	G	Country of manufacture	U
Rating (eg TAG1)	A	Build line number	0178
6 cylinders	F	Year of manufacture	P

Engine family and type code		
Build list ID pre January 2009	Build list ID from January 2009	Product type
2206 range		
N/A	TGBF	2206TAG2 (13 litre)
N/A	TGDF	2206TAG3 (13 litre)
N/A	TGFF	2206TAG4 (13 litre)
N/A	TGHF	2206TAG5 (13 litre)
Build list ID pre January 2008	Build list ID from January 2008	Product type
2300 range		
FGA06	FGAF	2306TAG1 (14 litre)
FGB06	FGBF	2306TAG2 (14 litre)
FGD06	FGDF	2306TAG3 (14 litre)

Engine family and type code		
Build list ID pre January 2008	Build list ID from January 2008	Product type
2500 range		
MGA06	MGAF	2506TAG1 (15 litre)
MGB06	MGBF	2506TAG2 (15 litre)
MGD06	MGDF	2506TAG3 (15 litre)
MGE06	MGEF	2506TAG4 (15 litre)
2800 range		
HGA06	N/A	2806TAG1 (16 litre)
HGB06	N/A	2806TAG2 (16 litre)
JGA06	JGAF	2806TAG1 (A) (18 litre)
JGB06	JGBF	2806TAG2 (18 litre)
JGD06	JGDF	2806TAG3 (18 litre)

4000 Series (Stafford)

Engine number guide			
Example:	DGB F 0081 U 0017 B		
4000 Series engine	D	Fixed build number (0000 means configured product)	0081
Generator set application	G	Country of manufacture	U
Rating (eg TAG2)	B	Build line number	0017
6 cylinders	F	Year of manufacture	B

Engine family and type code - Diesel		
Build list ID pre January 2008	Build list ID from January 2008	Product type
4006 range		
DGA06	N/A	4006TAG1
DGB06	DGBF	4006 / 4006-23TAG2 (A)
DGD06	DGDF	4006 / 4006-23TAG3 (A)
DGM06	N/A	4006TWG
DGP06	N/A	4006TEG
4008 range		
DGL08	DGLH	4008TAG
DGA08	DGAH	4008TAG1 (A)
DGB08	DGBH	4008TAG2 (A)
DGK08	N/A	4008TWG2
4012 range		
DGL12	N/A	4012TAG
DGA12	DGAM	4012 / 4012-46TAG1 (A)
DGB12	DGBM	4012 / 4012-46TAG2 (A)
DGD12	DGDM	4012-46TAG3 (A)
N/A	DGLM	4012-46TAG0A
DGM12	N/A	4012 TWG
DGK12	DGKM	4012 / 4012-46TWG2 (A)
DGN12	DGNM	4012-46TWG3 (A)
N/A	DGVM	4012-46TWG4 (A)
DGP12	N/A	4012TEG
DGR12	N/A	4012TEG2
4016 range		
DGL16	DGLR	4016TAG
DGA16	DGAR	4016TAG1 (A)
DGB16	DGBR	4016TAG2 (A)
DGK16	DGKR	4016TWG2
DGR16	DGRR	4016TEG1/2 (A)
N/A	DGPR (Introduced July 2010)	4016-61TRG1 (A)
N/A	DGWR (Introduced July 2010)	4016-61TRG2 (A)
N/A	DGXR (Introduced July 2010)	4016-61TRG3 (A)

Engine family and type code - Gas		
Build list ID pre January 2008	Build list ID from January 2008	Product type
4006 range		
DIE06	DIEF	4006TESI
DIF06	DIFF	4006TESI
DIH06	DIHF	4006TRS
DIJ06	DIJF	4006TRS
4008 range		
DIE08	DIEH	4008TESI
DIF08	DIFH	4008TESI
DIH08	DIHH	4008TRS
DIJ08	DIJH	4008TRS
4012 range		
DIE12	DIEM	4012TESI
DIF12	DIFM	4012TESI
4016 range		
DIE16	DIER	4016TESI
DIF16	DIFR	4016TESI
DIG16	DIGR	4016E61-TRS
N/A	DIHR (Build List ID from Jan 2009)	4016TRS
N/A	DIJR (Build List ID from Jan 2009)	4016TRS

Note

A letter 'A' after the engine type equals the first evolution of that product, eg TAG1A

2000/3000 Series Mechanical (Shrewsbury)

Engine number guide			
Example: SG A 06 0010 U 0001 Y			
Engine application	SG	Country of manufacture	U
Engine family and type code	A	Build line number	0001
Number of cylinders	06 = 2000 Series, 08/12 = 3000 Series	Year of manufacture	Y
Engine specification number	0010		

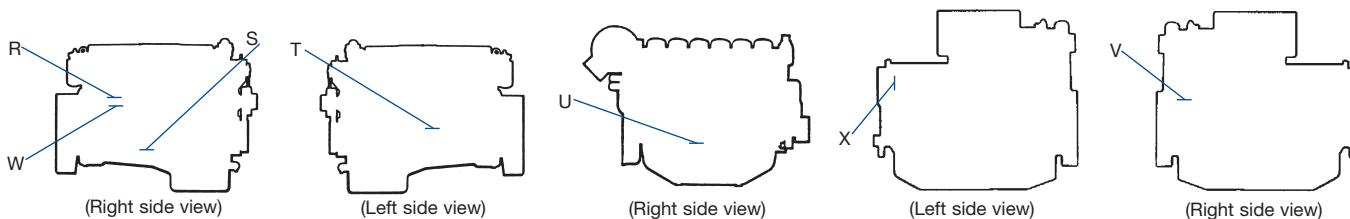
Engine family and type code					
Family: SA Automotive		Family: SI Gas		Family: SG Generator set (cont/d)	
SAA	300TX	SIA	SI	SGE	TAG4
SAB	320MX	SIB	SI Gas Unit	SGF	TG
SAC	335TX	SIC	TSI CHP	SGG	TG1A
SAE	350E	SID	TSI Gas Unit	SGH	TG2A
SAG	375TX	SIE	TWSI CHP	SFJ	TTAG
SAJ	340TX2	SIF	TWSI Gas Unit	SGK	TWG2
SAK	380TX2	Family: SM Marine		SGL	TAG
SAL	410TX2	SMA	M600T1	SGM	TAG5
Family: SB Short Block		SMB	M700T1	Family: SH Horizontal	
SBA	TX	SMC	M800T1	SHA	TWH
SBB	2000 Series	Family: SF Forklift		Family: SP Plant	
SBC	3008 Series	SFA	T1	SPA	T
SBD	3012 Series	SFB	T2	SPB	T1
Family: SL Long Engine		SFC	TA	SPC	T2
SLA	TX / Euro 2	SFD	TW	SPD	TA
SLB	2000 Series	Family: SG Generator set		SPE	TAP
SLC	3008 Series	SGA	TAG1A	SPJ	TP
SLD	3012 Series	SGB	TAG2	SPK	TTA
SLE	3008 Marine	SGC	TAG2A	SPL	TTAP
SLG	3008 / 3012SI	SGD	TAG3A	SFM	TW
		SGE	TAG4	SPP	TW1

Shrewsbury Product (produced pre 1994)

Engine number guide			
Example: 8C 27655 U 88900 W			
Engine family and type code	8C	Build line number	88900
Engine specification number	27655	Year of manufacture	W
Country of manufacture	U		

Engine family and type code	
8BT, 8CTA, 8DTW	Eagle
8CTA	Eagle TX
8BT, 8CTA/TTA, 8DTW, 8ESI, 8GTW-H	2000 Series
4AT, 4BTA, 4ESI	3008/CV8
4CTI	Condor Marine
6ATA, 6CTW, 6DT, 6ESI	3012/CV12

Engine type	Position
Eagle/2000 Series	R
3008 Series	T
3012 Series	S
2300/2500/2800 Series	W
4006/4008 Series	U
4012/4016 Series	V or X



Asia

Singapore

Perkins Engines (Asia Pacific) Pte Ltd
14 Tractor Road
Singapore 627973
Tel: +65 6828 7469
Fax: +65 6828 7414

China

Perkins Industrial Power Systems-Shanghai
Room 2103, Lei Shing International Plaza,
1319 West Yan'an Road,
Shanghai 200050
China
Tel: 86 21 22160704
Fax: 86 21 52136624

Americas

North America

Perkins Engines Inc
N4 AC 6160
PO Box 610
Mossville, IL 61552-0610, USA
1-888-PERK-ENG
Tel: +1 309 578 7364
Fax: +1 309 578 7329

South America

Perkins Motores do Brasil Ltda
Rua Alexandre Dumas, 1711 Ed. Birman 11
9º andar, Chácara Santo Antonio
São Paulo / SP - Brasil
Cep: 04717-004
Tel: +55 11 2109 2038
Fax: +55 11 2109 2089

All information in this document is substantially correct
at time of printing and may be altered subsequently.
Publication No. PP3000/09/13 produced in England
©Perkins Engines Company Limited 2013



THE HEART OF EVERY GREAT MACHINE

Europe, Middle East and Africa

Perkins Engines Company Limited
Peterborough PE1 5FQ
United Kingdom
Telephone +44 (0)1733 583000
Fax +44 (0)1733 582240

www.perkins.com